



這類別包括所有其他廠房，主要是專為特殊製造業而建，每間廠房通常由一名廠東使用。

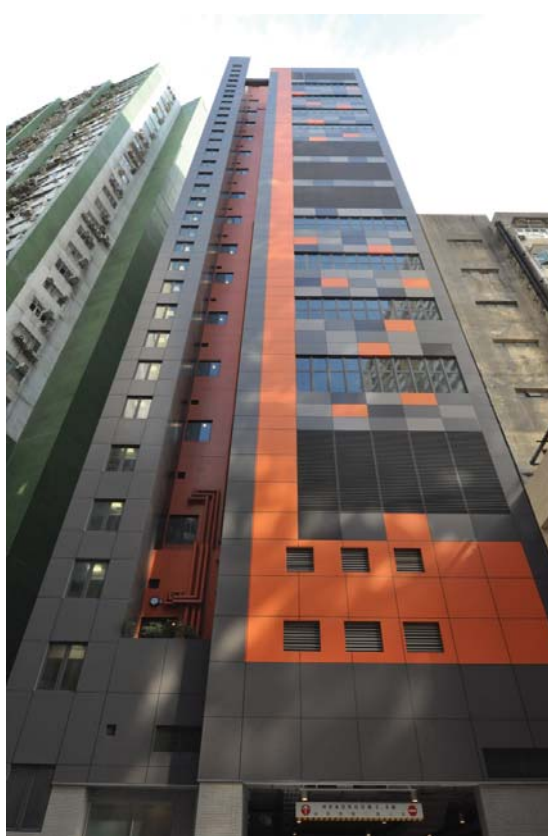
2016年年底這類物業的總存量為3 100 800平方米，其中新界佔88%。

2016年有四個新發展項目於新界落成，共提供47 500平方米樓面面積，單是西貢便佔新落成樓面面積的60%，另外32%則來自大埔。

This category comprises all other factory premises, primarily purpose-built for specialised manufacturing processes, and usually for occupation by a single operator.

The stock in this sector was 3 100 800 m<sup>2</sup> at the end of 2016, of which 88% came from the New Territories.

Four new developments in the New Territories with 47 500 m<sup>2</sup> floor space were completed in 2016. Sai Kung alone provided 60% of the newly completed space and another 32% came from Tai Po.



預計2017年的落成量將升至158 500平方米，但於2018年回落至36 000平方米。2017年的供應量主要來自西貢和元朗，分別佔其中50%和47%。2018年的新供應中，81%位於元朗。

Completions are expected to rise to 158 500 m<sup>2</sup> in 2017 but drop to 36 000 m<sup>2</sup> in 2018. Supply in 2017 will be mainly from Sai Kung with 50% and Yuen Long with 47%. In 2018, 81% of the new supply will be located in Yuen Long.