

「劏房」規管租賃 業主責任要認識

Landlord's Responsibilities for Subdivided Units
under Regulated Tenancy

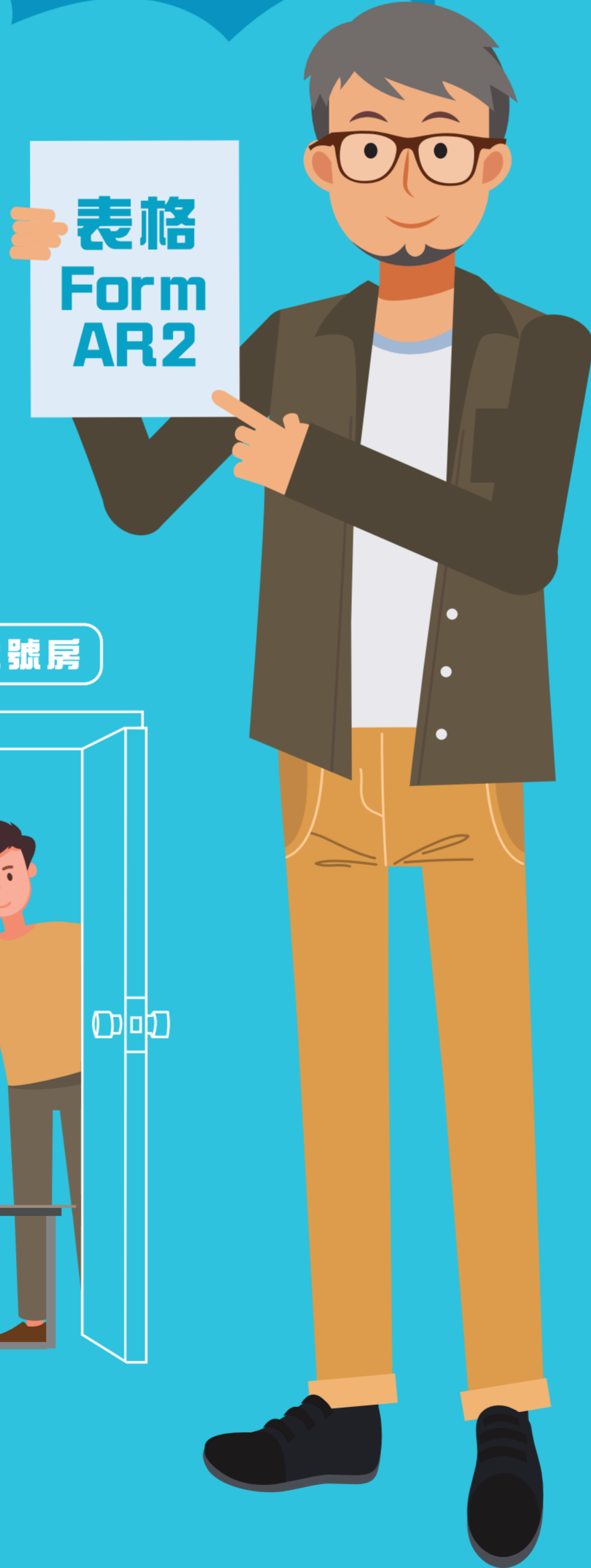


**須提交
租賃通知書**
To submit
Notice of Tenancy

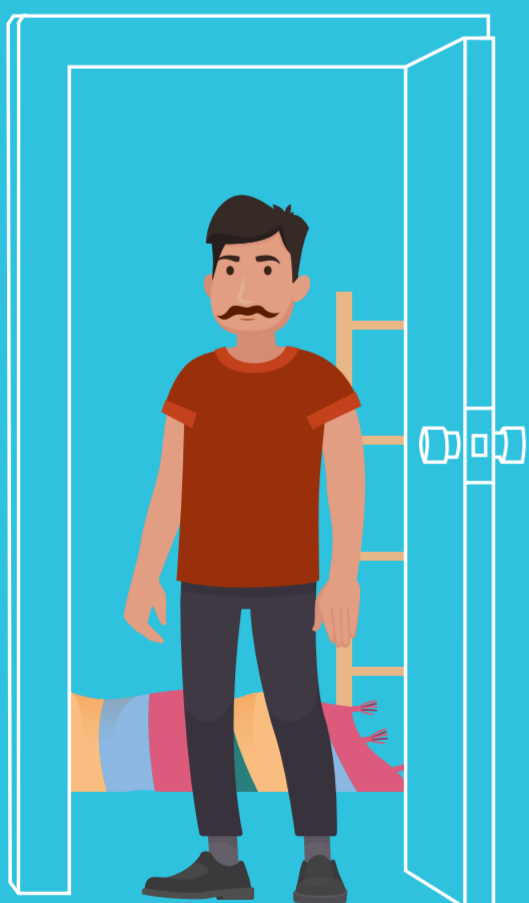
違者每項最高罰款
Maximum fine
for each offence
\$10,000



**不濫收租客
水電等費用**
Not to overcharge
tenant for water
and electricity, etc.



Room 1 號房



Room 2 號房



Room 3 號房



查詢或投訴
Enquiries or Complaints

enquiries@rzd.gov.hk 2150 8303

www.rzd.gov.hk/tc/our_services/part_iva.html



差餉物業估價署
Rating and Valuation Department