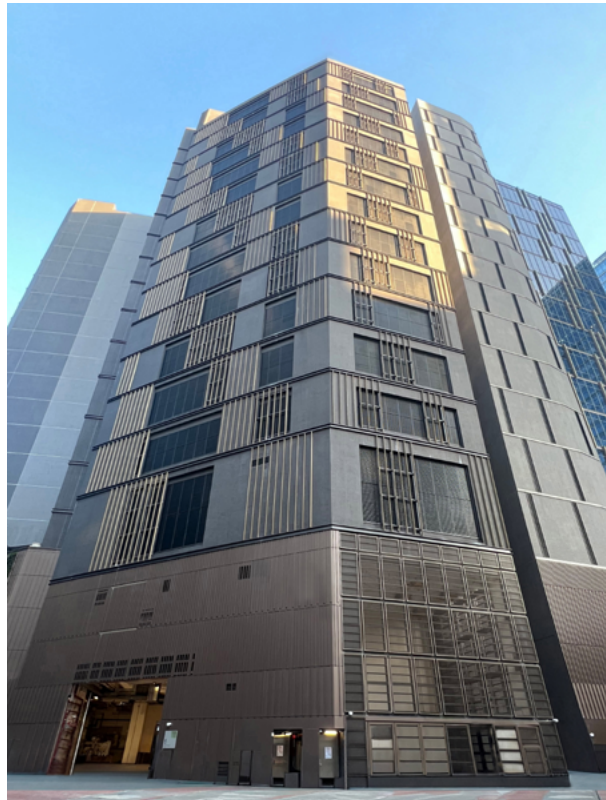


这类别包括所有其他厂房，主要是专为特殊制造业而建，每间厂房通常由一名厂东使用。

This sector comprises all other factory premises, primarily purpose-built for specialised manufacturing processes, and usually for occupation by a single operator.

2025年年底，这类物业的总存量为3 466 700平方米，其中91%来自新界。

The stock in this sector was 3 466 700 m² at the end of 2025, of which 91% came from the New Territories.



2025年的落成量全部位于荃湾，提供8 500平方米新面积。

Completions in 2025 were all located in Tsuen Wan, providing 8 500 m² of new spaces.

预计落成量在2026及2027年将分别增至54 900平方米及41 800平方米。2026年的新落成量将主要来自西贡，占总预测落成量的47%。在2027年，全部预测落成量将来自离岛。

Completions are expected to rise to 54 900 m² in 2026 and 41 800 m² in 2027. New completions in 2026 will be mainly from Sai Kung at 47% of the total. In 2027, all of the forecast completions will come from Islands.